



Hangzhou Chaoshan Luxury Villa Project

by LEAP Design



THE SITE

**Hangzhou Chaoshan Scenic Area :
Inheriting Chinese Song Dynasty's Charm
in Natural Scenery**

The Chaoshan Scenic Area is located in Hangzhou, which is the renowned ancient capital of China. It has been 2000 years that Chaoshan become the most famous spot of wonderful *plum blossom* scenery. It is also the National Listed Natural & Historical Scenic Area.

Our project is located in the jurisdiction where this high-value scenic area is situated, with excellent scenery views and is considered one of the top residential site. The LEAP design team explored how to respond to the context of ancient and modern times and how to stimulating this valuable landscape resources.



Strategy Two-Create A Water System



Strategy Three-Gardens With Cultural Symbol,



Strategy One- Borrowed The Scenery



THE PLANNING STRATEGY

Fully leverage the advantages of natural landscapes

The core strategy of planning and architectural design is to fully leverage the advantages of natural landscapes, incorporating the greenery of Chaoshan Mountain and city parks into the residential area using the technique of "borrowed scenery", much like traditional Chinese garden design methods.

The second strategy involves incorporating the element of water into the planning layout, guiding water into the garden, and using various landscapes such as cascading waters, waterfalls, and ponds to create a water system that runs through the entire garden. This is integrated with the river landscape structure of the public city park.

The third strategy is to create a traditional living experience within the residential area by combining multi-progression gardens with cultural symbol, to recreate the refined Yaji, the lifestyle interests of literati from the Song Dynasty.

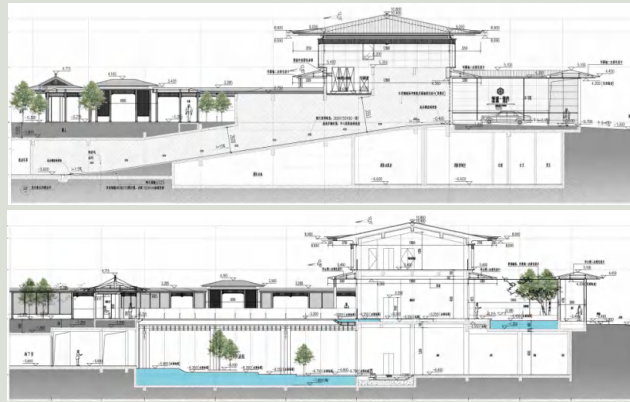
THE CONCEPT

Reshaping the poetic garden life of Song-style

The core concept of this project is to shape contemporary Song Dynasty style garden life. The architectural design scheme is based on in-depth cultural research, summarizing the aesthetic essence of elegant, balanced, and graceful Song Dynasty architecture, and creating with modern building materials.

In the creation of living environments, emphasis is placed on the organic form of Song Dynasty gardens that are free and wild, integrating the interesting scenes of Chinese Song Dynasty literati's "elegant gatherings" into semi outdoor spaces, and combining traditional aesthetic experiences with modern high-quality living needs.

Section 1	Ground Floor Plan of Typical Area	Basement Floor Plan of Typical Area
Section 2		





The ground plan of house type 330 m²



The gray space & interior space of house type 330 m²

THE PRIVET SPACE

Oriental space that continue the aesthetics of site

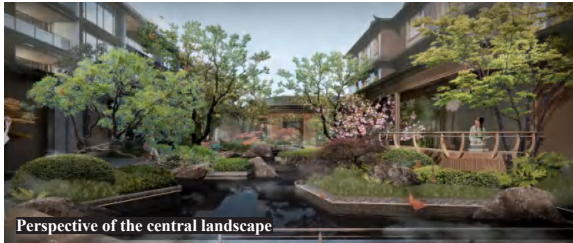
The building continues the Song style, with a hillside roof, a plum blossom-style hanging fish decoration, and a hanging decoration on the balcony. The whole adopts the form of horizontal lines, which is in line with *Ya* (means elegant) of the Song style. The courtyard also uses the gardening techniques of the Song-style garden, using the method of "piling mountains, digging stones, and diverting water", and divides the courtyard into a number of upper, middle and lower three levels, with tall buildings, shrubs and elegant residences, and small bridges and flowing water, which increases the visual sense of richness and hierarchy. The interior space is simple and atmospheric, and the stone with deep colors and patterns is selected to integrate with the scenery outside the window.



Perspective view of south elevation



Plum garden



Perspective of the central landscape



Plum pavilion



Plum garden

THE PUBLIC SPACE

A hidden wonderland as Chinese painting

The entire public area reflects the spatial characteristics of *Song Dynasty gardens*, which is free in format, rich like the nature. The inspiration for color design comes from traditional architecture of the Song Dynasty. The champagne gold as the main color creates a quaint yet magnificent image. The legant luxury stone as dark color, adorned in a lush green environment. All elements are harmonious and rich in details, just like a *Chinese painting*.

The entrance steps and landscape walls create a unique sense of ritual, and the moment you step into the community, you will feel like entering a wonderland, which is a great hidden place in the boisterous city.



Perspective view of courtyard lane



Perspective view of lobby

THE CULTURAL ELEMENT DESIGN

The cultural imprint of Chaoshan's unique ancient plum
Translate Song style architectural symbols into modern language

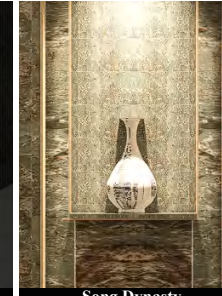
Chaoshan has its own unique six-petal ancient plum blossoms that have been passed down for thousands of years: Tang plum and Song plum. The simplified image of plum blossoms is engraved as a cultural imprint and integrated into the detailed design of Song-style buildings, such as screens and hangings, to inherit cultural characteristics, and the architectural design is more subtle, exquisite, and luxurious.



Plum blossoms hanging



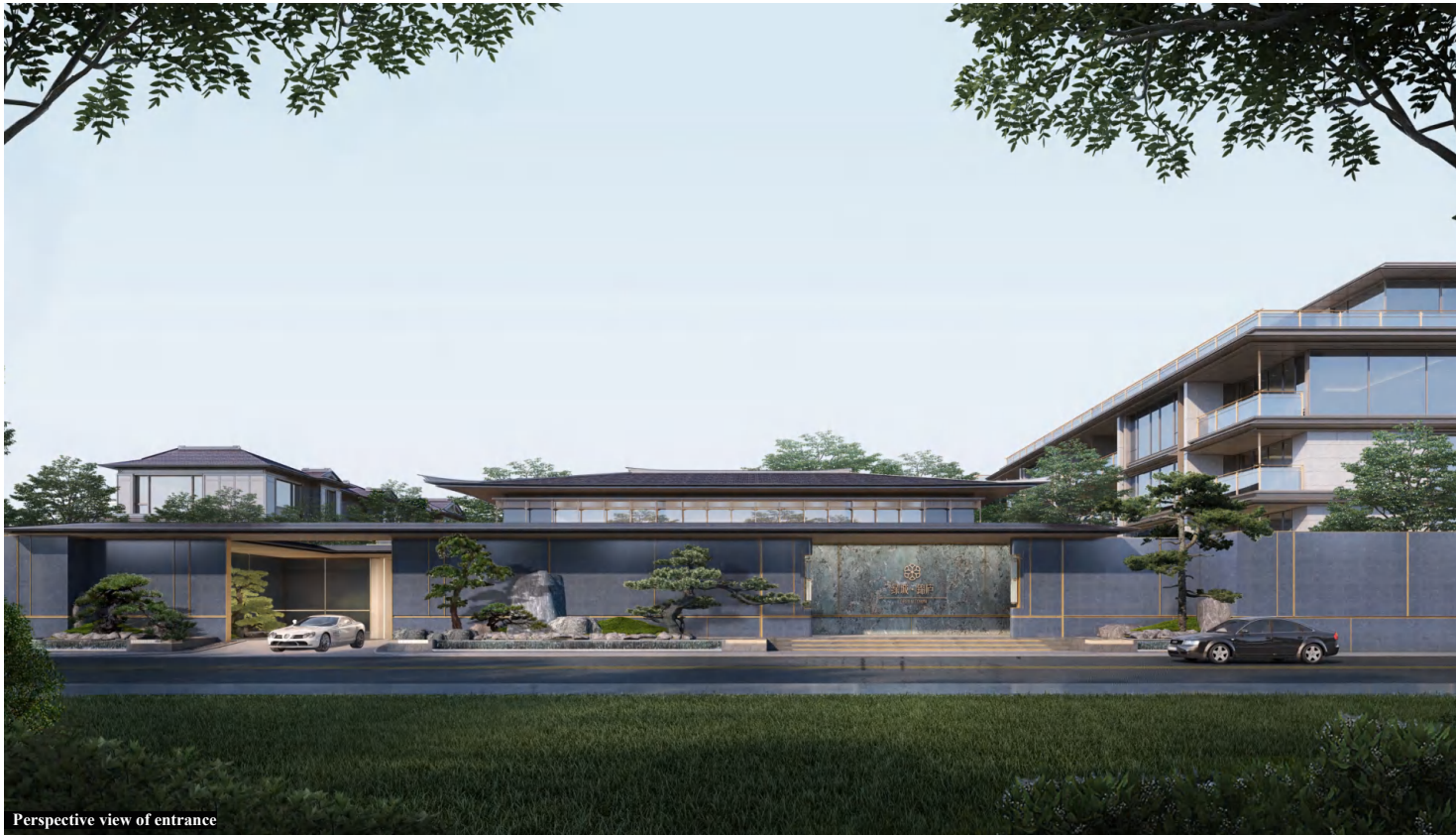
Plum blossom painting of Song Dynasty



Song Dynasty Celadon elements



Decoration of Fengdu Bell & seal carving



Perspective view of entrance



Plum blossom seal carving



Plum blossom seal carving



Perspective view of corridor