



# Belonging

Under the condition that the house is slightly narrow and the height of the house is not enough, how to create a comfortable space for the three generations to get along with each other, and gather the sense of belonging of the big family with a delicate and modern art form is the most important task in this case.

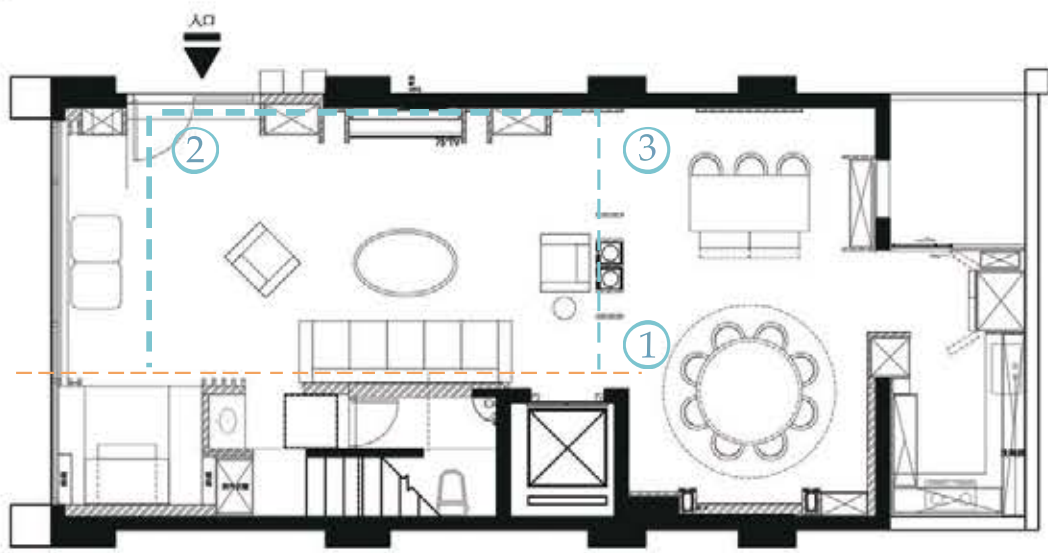
This is a multi-story house belonging to a family of three generations. The living members include the father who is an entrepreneur, his adult children and his young grandchildren.



The first floor is designated as a common area. The second to fifth floors are set as private areas for the family, with independent living and resting functions. Diversified functions such as elderly care, social activities, office and children's learning are planned according to the needs of different members. The sixth floor is the entertainment audiovisual space, and extends the semi-outdoor dining area to meet the leisure situation of party gatherings.



The designer uses the linear elements of the grid as a metaphor for the "open branches and scattered leaves" image of the Eastern family, which grows and connects from the first floor to different floors, and then transforms into the boundaries of display, storage and compartment. Under the reflection of the mirror, it also creates a bright sense of space, perfectly resolving the visual limitation of the height of the house.



Common Area

- ① The sofa's back wall and the elevator shaft are aligned to conceal the staircase pathway.
- ② Shaping a square living room layout.
- ③ A combination of grids and displays is used to create a visually transparent boundary, eliminating the cramped and dark feeling caused by the narrow house layout.





Incorporating spaces for worship, a living room, an island, and a banquet round table in the common area.





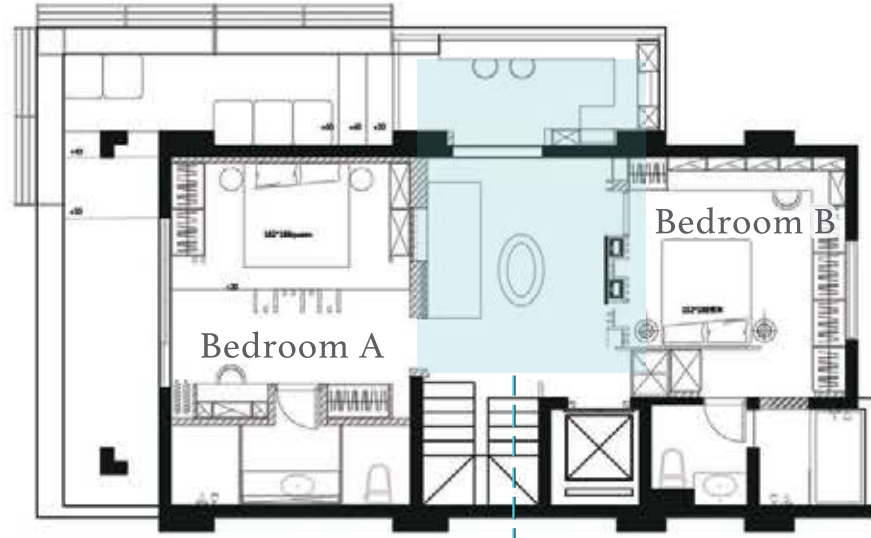
Elderly Care



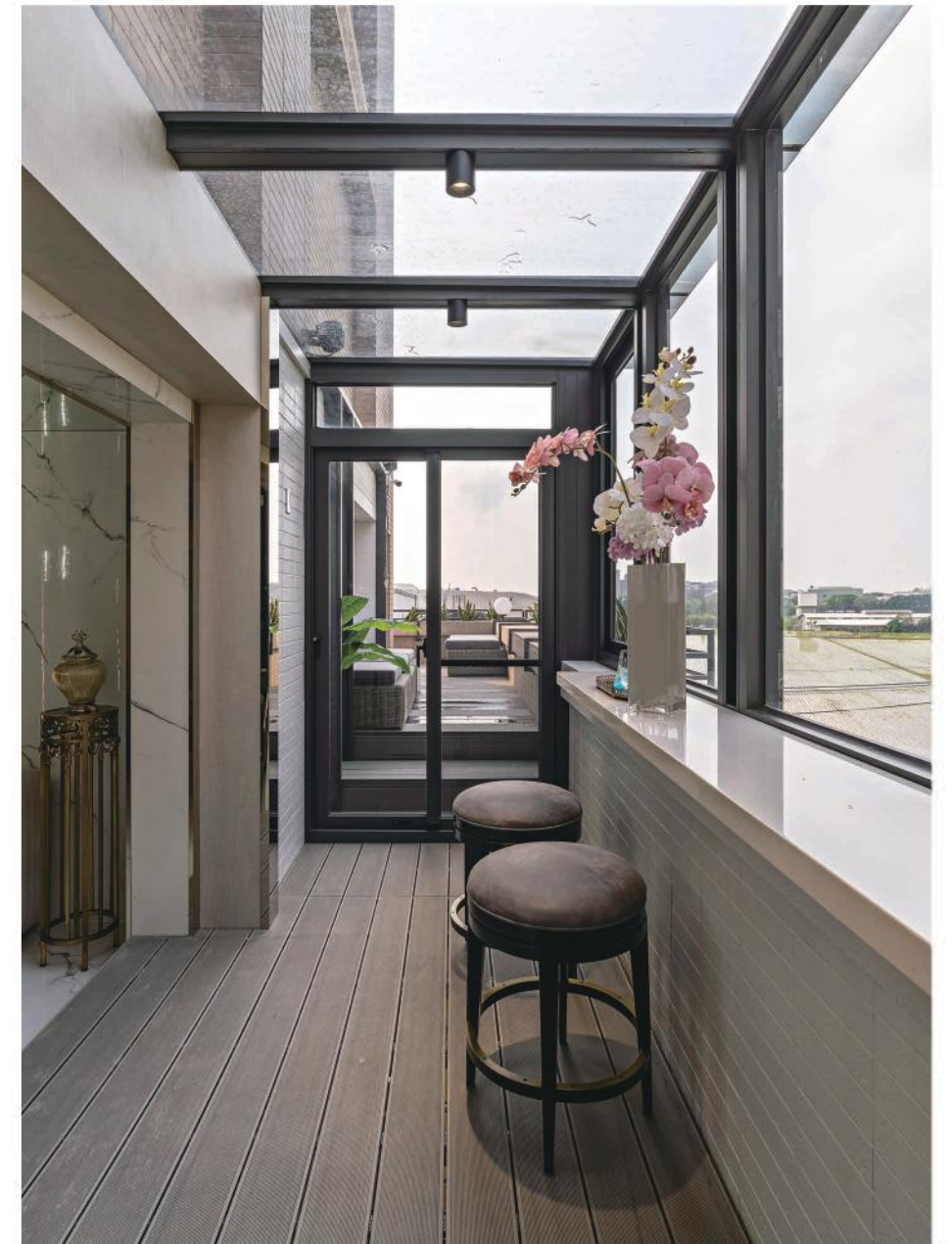
The second floor is planned as the private area for the elderly in the family.

Combining living and sleeping functions, it can eliminate the gap of the floor and the flexibility of space functions in response to future care needs, and the privacy can be adjusted by using electric control glass.

Spaces for Socializing



On the third floor, the living room is connected to the external terrace to introduce natural light and also provide social and reception needs.





On the fourth and fifth floors, according to the living habits of adults and children, additional office and reading areas are planned to create practical private areas.



# Bedroom



