



FENG YONG  
**CHAO YANG**

凤凰朝阳  
URBAN GARDEN

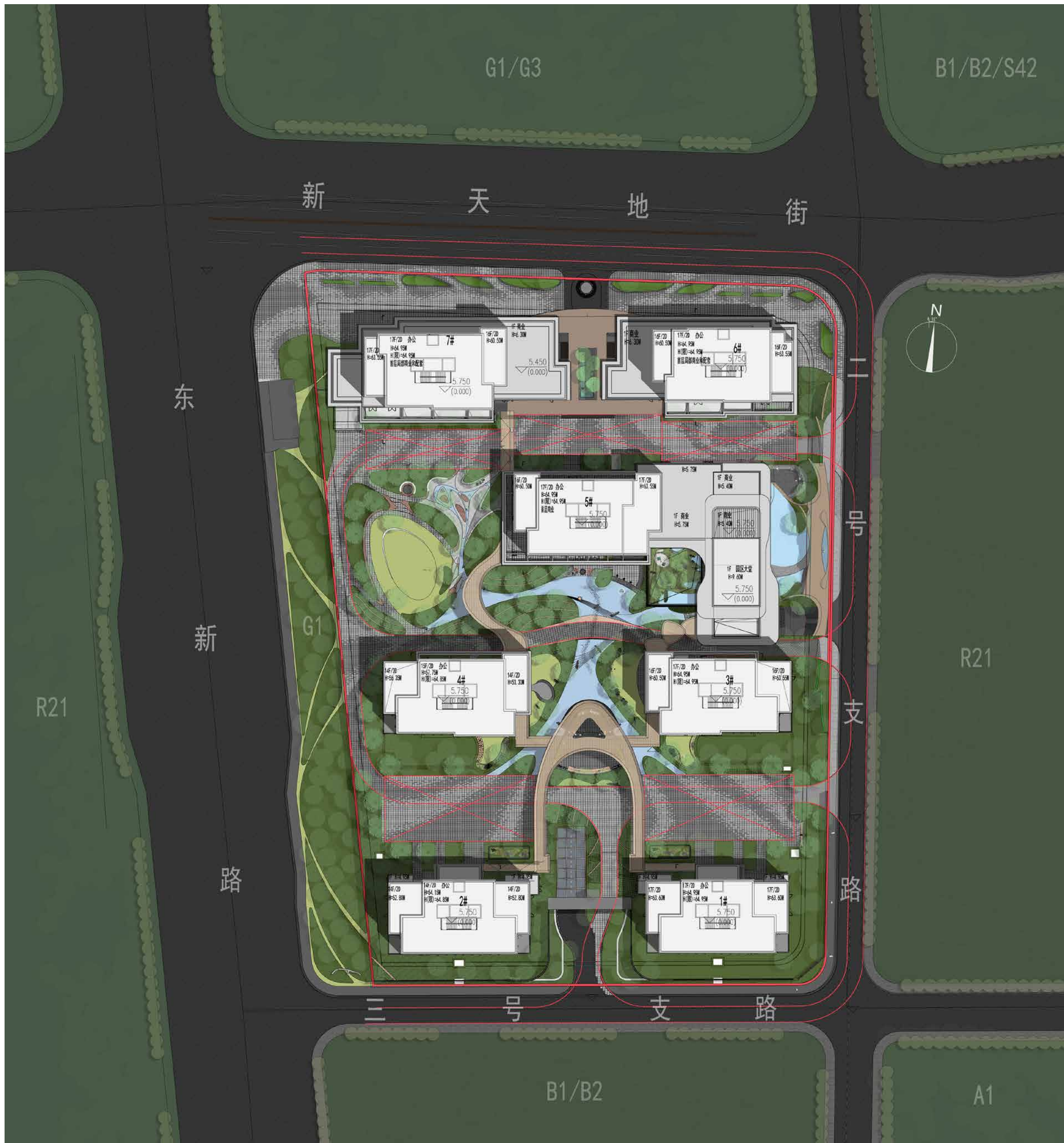


The project is situated in the Dongxin Area of Gongshu District, Hangzhou City. Its prime location allows it to benefit from a rich historical heritage and comprehensive amenities. As the city continues to develop, this culturally significant land is poised to rejuvenate, unveiling a fresh city image. The design takes into account future urban development plans, maximizes the local natural landscape, transportation, and commercial advantages, delves into regional attributes, and leverages design to enhance the overall value of the project. The project is conceived to seamlessly integrate with commercial benefits, unifying master planning, architectural design and style to create a masterpiece that aligns with the city's positioning and achieves win-win results for both designers and the client.



The project features a simple and modern architectural design, with 7 high-rise buildings arranged in sequence from south to north. With a focus on both architectural details and functionality, the design's goal is to create a high-quality community. The master plan design gives priority to the internal spatial experience within the community, aiming to create a secluded garden oasis in the city, offering a natural and serene retreat in a diverse urban environment. In addition to fostering a secluded atmosphere, the design also emphasizes the creation of open spaces within the community. By incorporating a ground-floor commercial space at the northern entrance and integrating it with the outdoor landscape, the architects have envisioned a vibrant commercial block that enhances the city's surface and identity, allowing the project to harmoniously blending with the urban context. By creating a new landmark building complex in the Dongxin Area and even the wider Gongshu District, the project aspires to contribute to the future development of Hangzhou.





The project is located in Gongshu District, Hangzhou, Zhejiang. It is situated to the east of Dongxin Road, south of Xintiandi Street, west of No. 2 Branch Road, and north of No. 3 Branch Road. It enjoys a prime location with comprehensive amenities, exceptional location advantages and easy accessibility. Bordering Dongxin Road, this area is immersed in the deeply rooted cultural heritage of Hangzhou. As the city continues to develop, this culturally significant land is poised to rejuvenate, promising a fresh city image.







With a focus on both architectural details and functionality, the design's goal is to create a high-quality community. The ground floor of the buildings incorporates natural landscapes, creating a harmonious spatial composition that maximizes its advantages. The community

features a barrier-free design and a pedestrian and vehicle separation system, fostering an inclusive, continuous, and safe environment for all age groups.







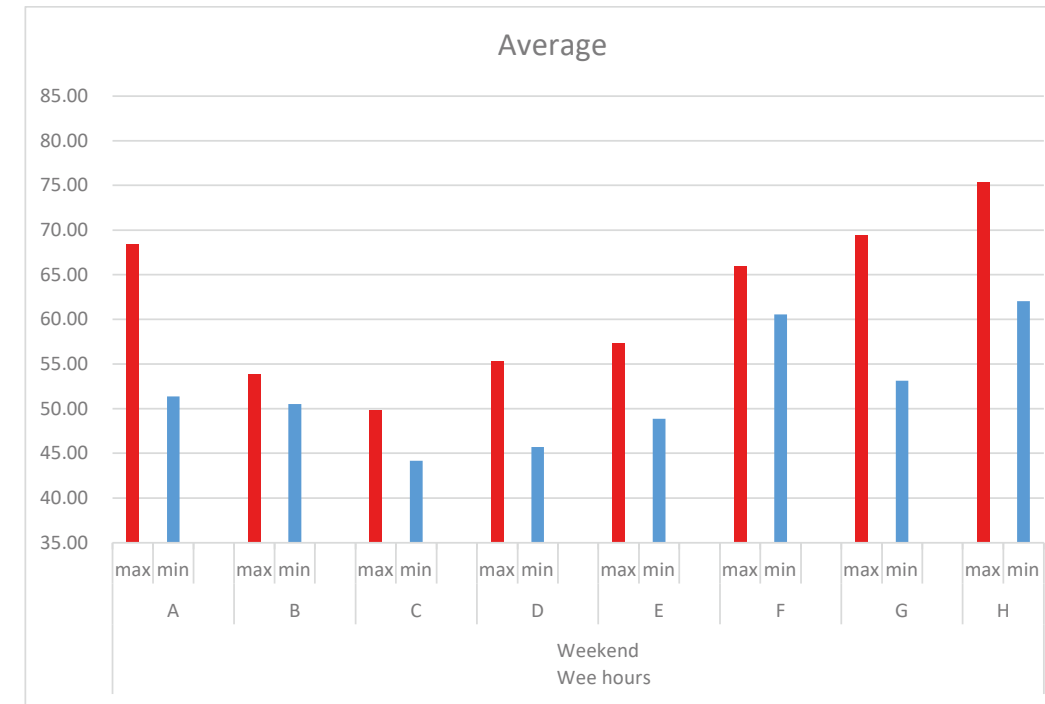
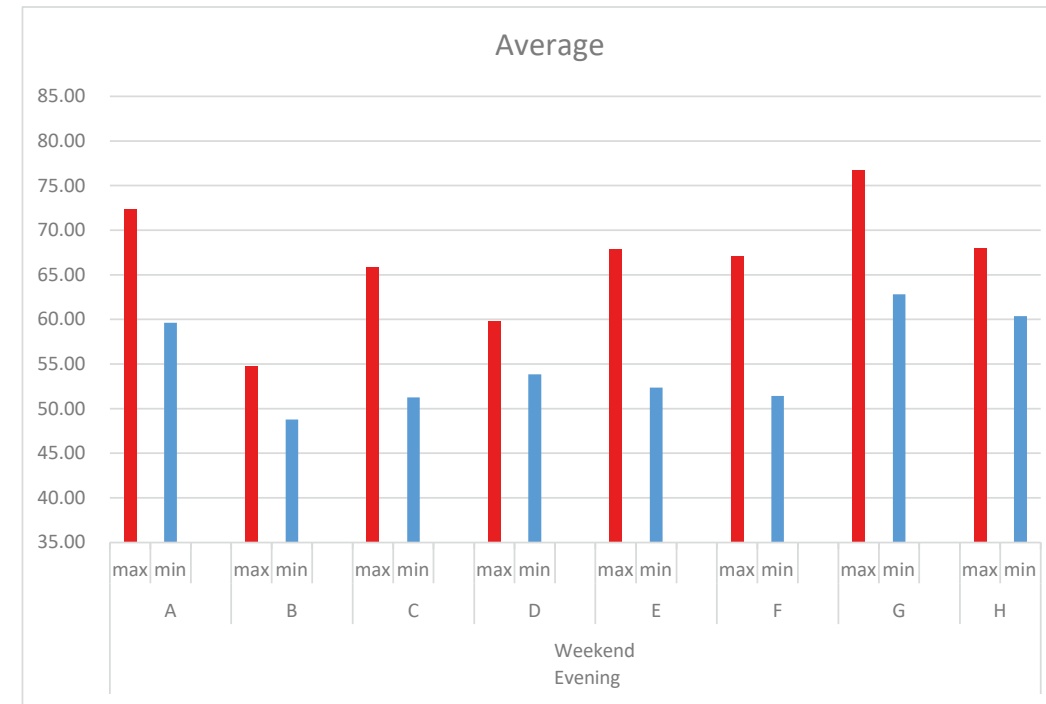
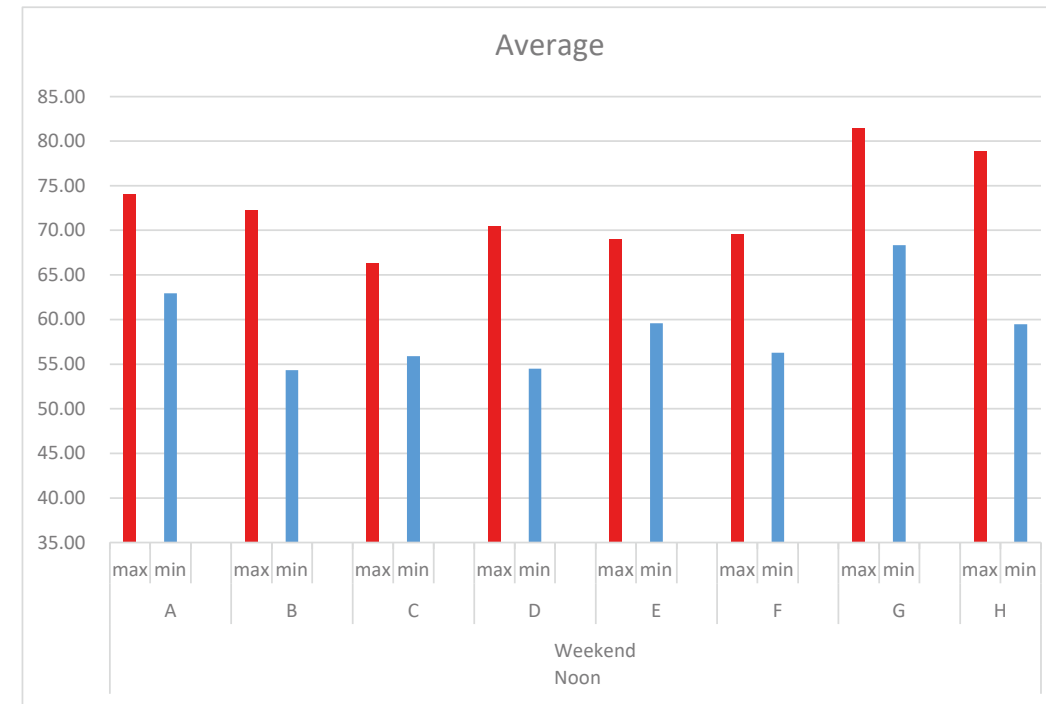
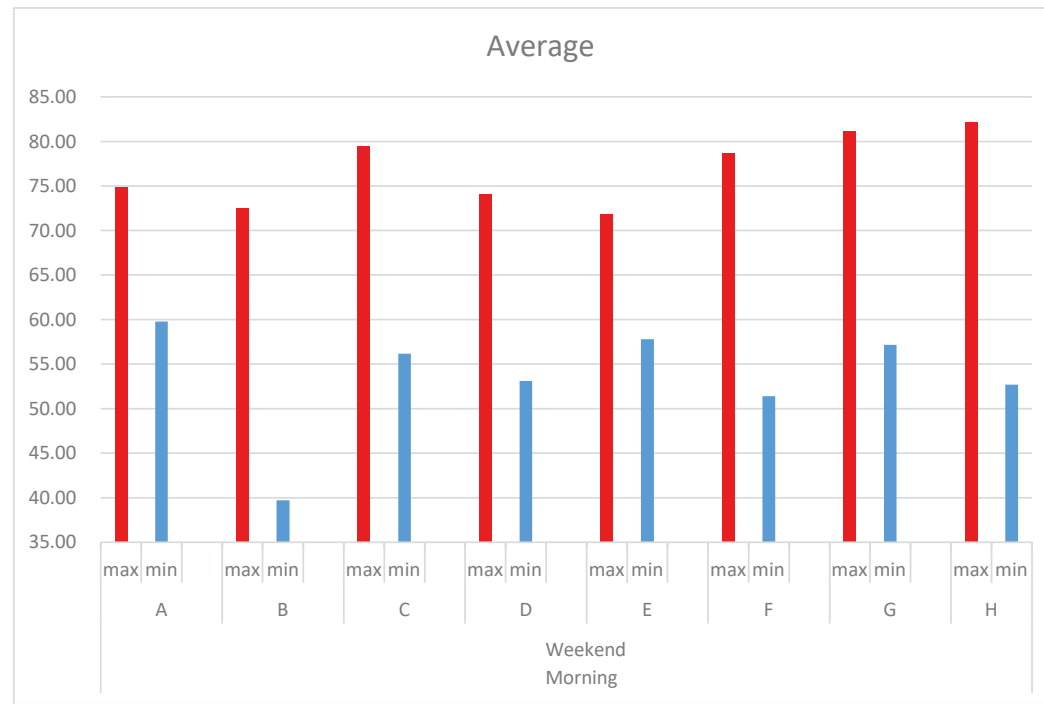
The site was once an industrial area, with constraints like a small area, a high plot ratio, limited landscape resources, and noise pollution. How to create a “secluded garden” in the city, considering the site conditions? The master plan design emphasizes the internal experience within the community. Buildings along the city road employ three-layer glass curtain walls to mitigate external noise. In the apartment layout, public areas are set along the city road, to ensure quietness of bedrooms.

Each building features a concise and modern design, incorporating exquisite frame structures to segment the facades and reduce the imposing feel of the building. The facade utilizes expansive glass curtain walls and aluminum panels, as well as stone claddings and paint in specific areas such as the switching stations and equipment rooms. This thoughtful blend of materials ensures both the quality and aesthetic appeal of the building, creating a timeless and upscale experience.

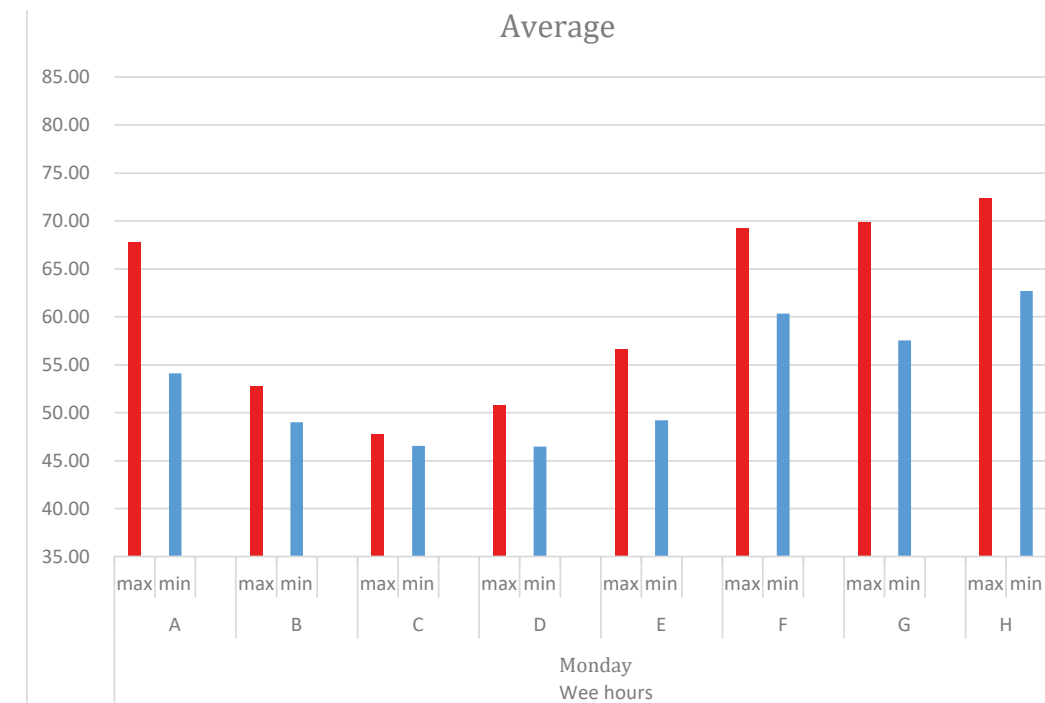
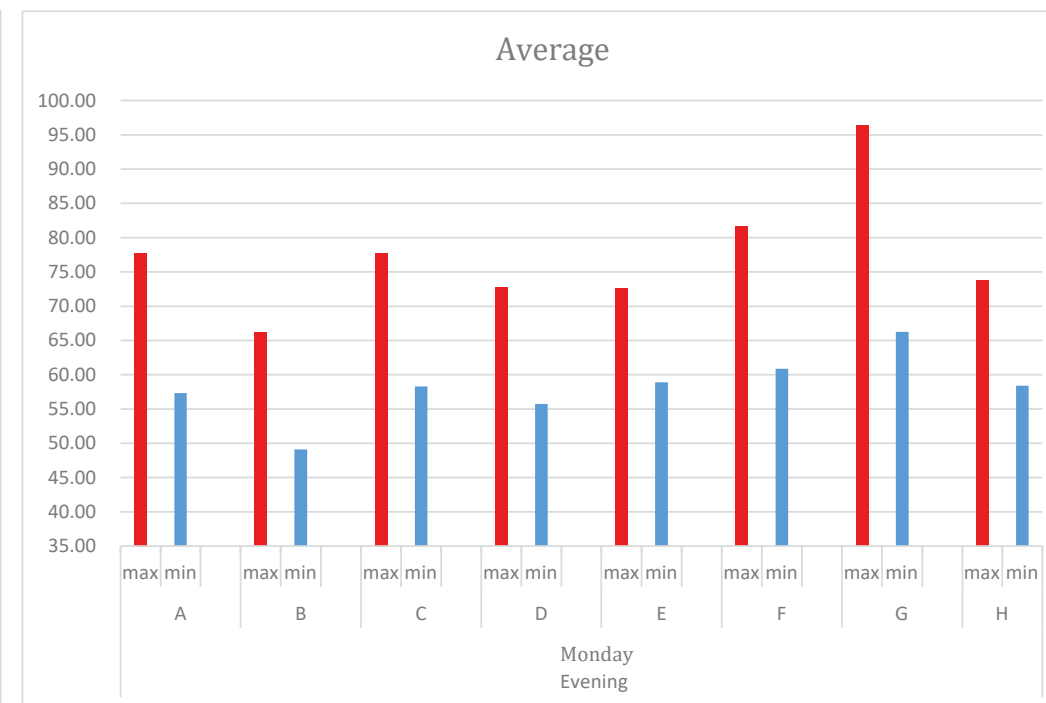
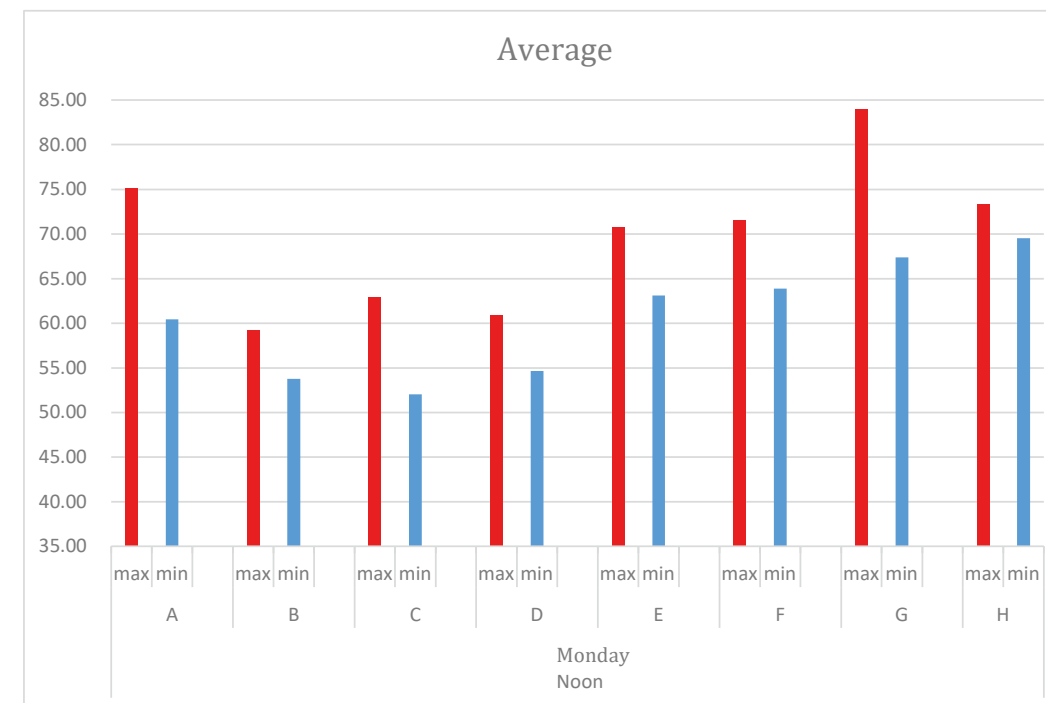
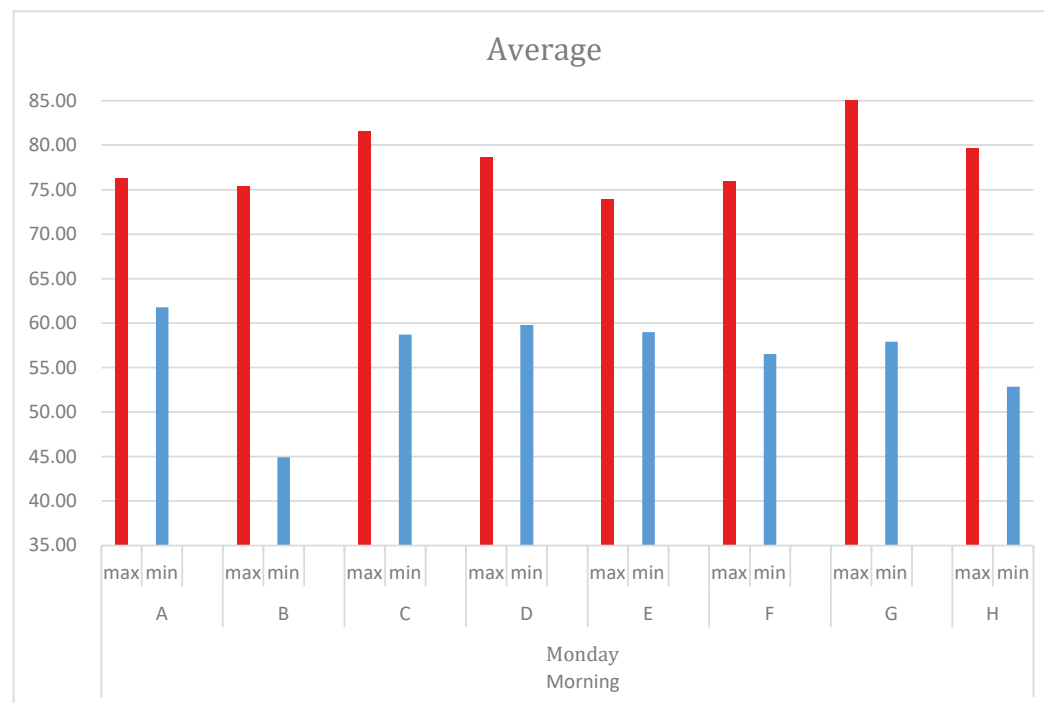




### Weekend



### Monday



### Wednesday

