



R&d Headquarters project of Haitian Group

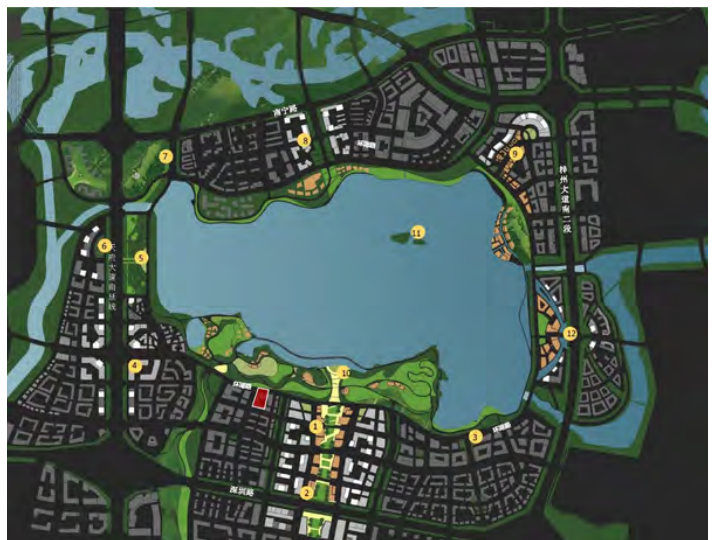
China Southwest Architectural Design and Research Institute Corp .Ltd.
Architectural Design



Introduction of the project

"Haitian Water Service serves the people".

The project site is located at the first cycle on the south bank of Xinglong Lake, Tianfu New District, Chengdu, Sichuan, China. This plot has been built into a high-tech gathering highland integrated with scientific research, innovation and incubation. The building is built along the lake side, with convenient transportation, and with a good natural ecological background, technology and nature integration development. The building has seven floors above ground and two floors underground, with a total investment of about 300 million yuan. The design adheres to the passive design concept and integrates environmentally friendly, low-carbon and energy-saving technologies into the building to create active and healthy office space, reduce building energy consumption and improve the quality of use.





Introduction of the project

Haitian Water Service Group aims at maintaining integrity and innovation, creating high-quality products and contributing to the society.

This project is the headquarters building of Haitian Group, which will significantly enhance its operational, scientific research, corporate image, and brand recognition, helping Haitian Group lead the world.

As China's environmental benchmarking enterprise, it has formed a modern and diversified industrial system with core businesses such as water supply and drainage, solid waste treatment, clean energy and water environment management. This project is positioned as the R&D headquarters office building of Haitian Water Service Group, different from the conventional general office. Corporate headquarters need to be tailored according to the corporate structure and main business, and corporate culture and development goals.

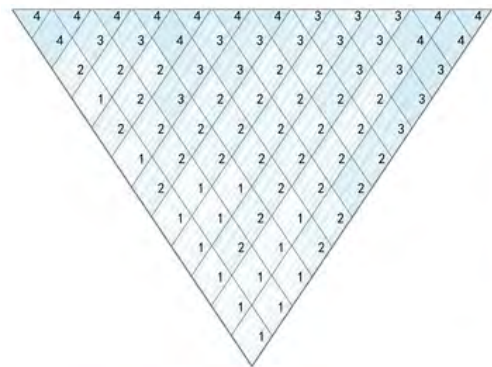
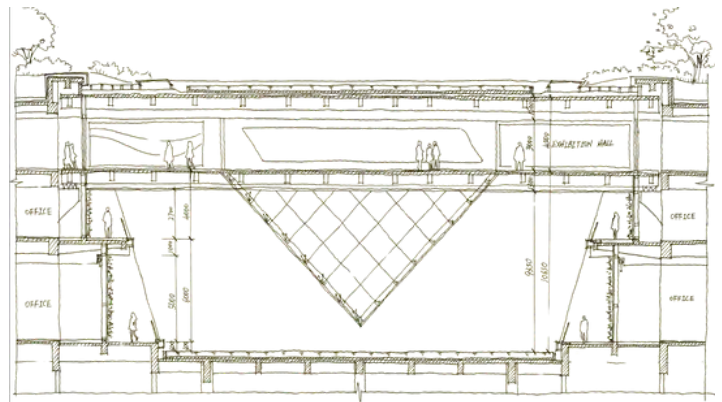




Design Concept

"Icebergs are nature's purest water." As solid water, icebergs and snow-capped mountains are an important part of the natural water cycle. Its crystal, pure and philosophical connotation is also consistent with the characteristics of the main business of Haitian Water Service Company. Just as 90% of the iceberg lies deep below sea level, only the tip of the iceberg is visible. As a scientific and technological research and development enterprise, its mission is to explore the internal logic behind the appearance and explore the unknown world hidden under the laws of nature.

The exterior design of the enterprise technology exhibition hall draws inspiration from the texture of icebergs; Using the cultural connotation of icebergs as a metaphor for the technological innovation spirit of Haitian Group - exploring the unknown after the surface.



The colored glaze pattern is composed of dot shaped colored glaze arrays, simulating the natural iceberg pattern; By adjusting the density of the colored glaze, a vivid and interesting appearance effect is formed.



Elegant Facade

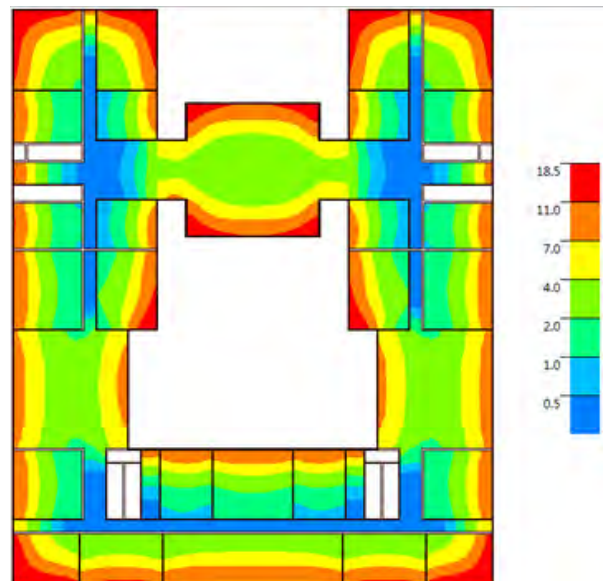
The outline of the building is regular, and the color of the appearance is calm and elegant, and the neat external boundary appropriately responds to the control guidelines of the urban design level. The R & D office area is suspended in the mirror pool, with left and right symmetrical arrangement, and can be flexibly used according to the needs of enterprise development. The company's headquarters office is located on the south side of the main axis of the building, leading the overall situation. The Iceberg Technology Exhibition Hall is suspended among the R&D office building and is used to display the core high technology of the company. The first floor of the exhibition hall is raised and integrated into the water feature to create a romantic interactive space. The iceberg exhibition hall is reflected in the clear mirror pool, such as pure iceberg molten water, which is a revelation and also blessing.



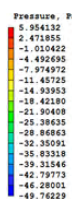


Create an active and healthy office space

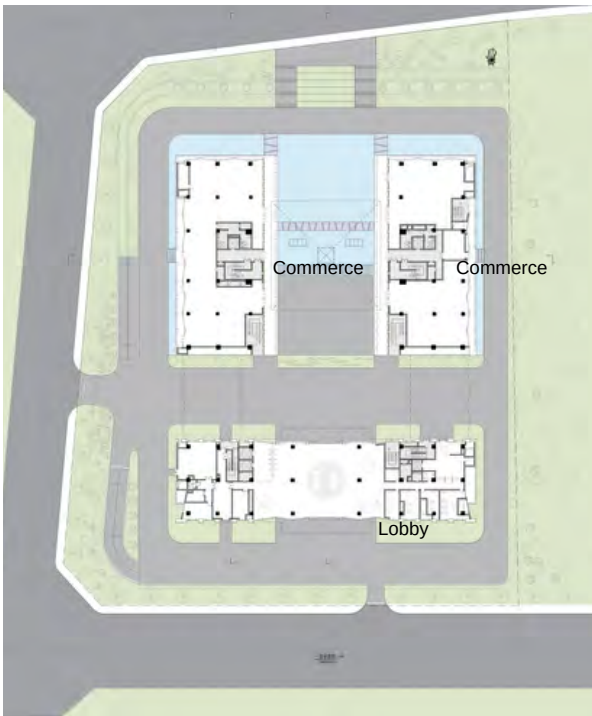
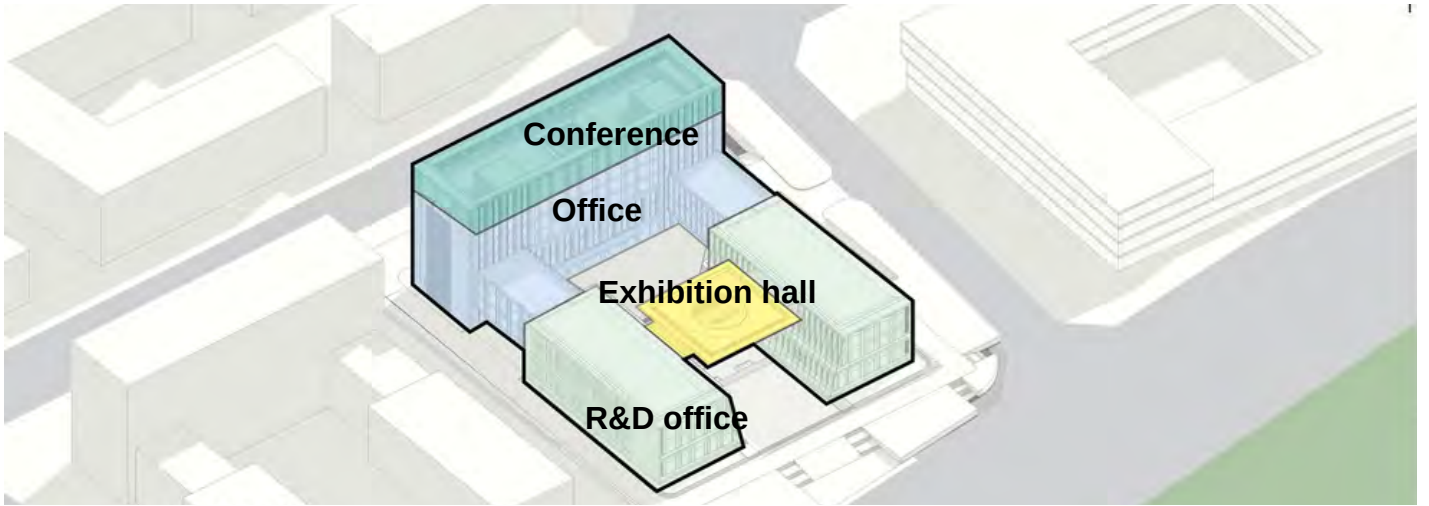
With the proposal of the national dual-carbon policy, the demand for office space has been also changed from a single spatial model of pursuing benefits and interests to a model of pursuing science and technology, humanization, green ecology and sustainable growth. We must adhere to the passive design concept and integrate environmental protection, low-carbon and energy-saving technologies into the building to create an active and healthy office space, reduce building energy consumption and improve the quality of use. It is necessary to pay attention to the dialogue between architecture and landscape, take "water" as the design element, and integrate the architecture into the regional natural and human ecological background, so as to help Haitian Group obtain a broader sustainable development prospect.



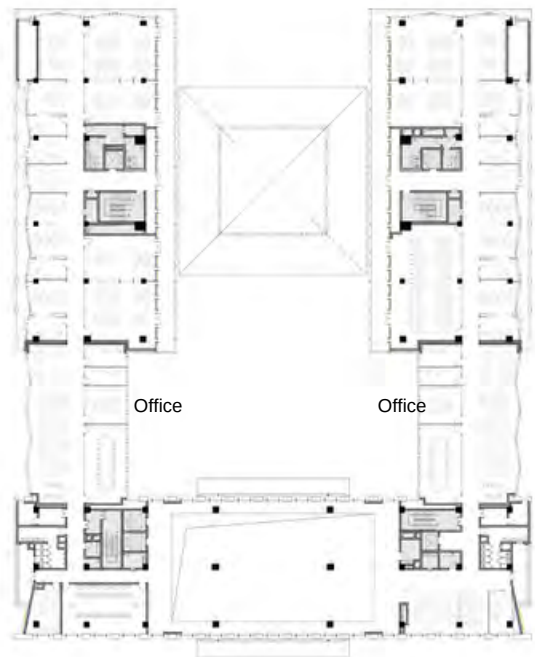
Lighting Analysis



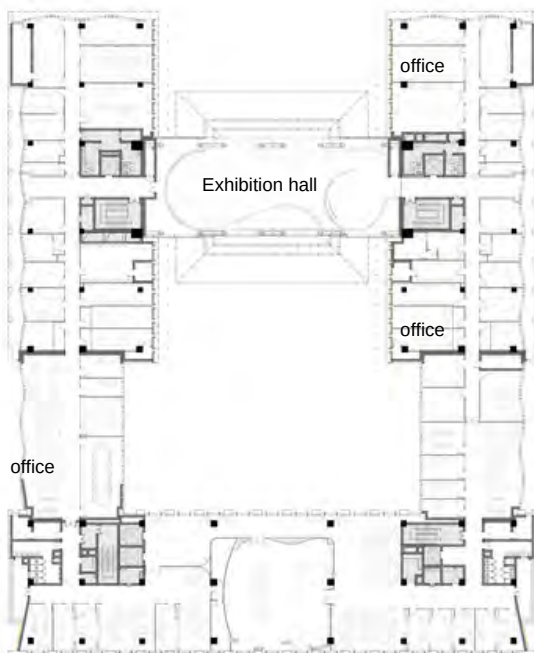
Wind Analysis



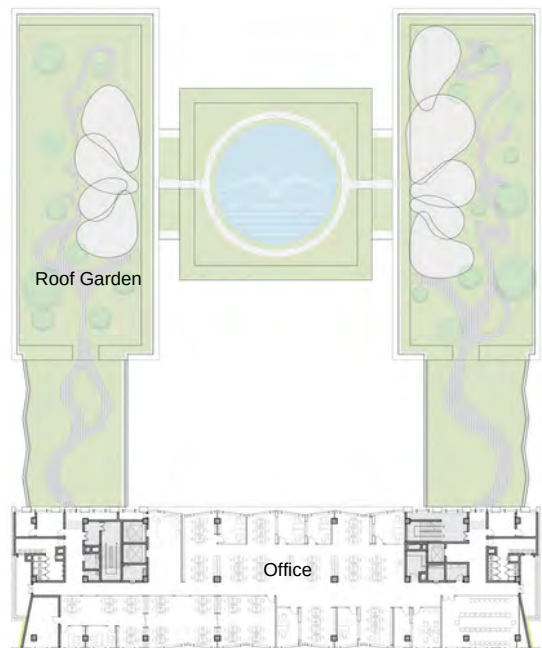
1st Floor



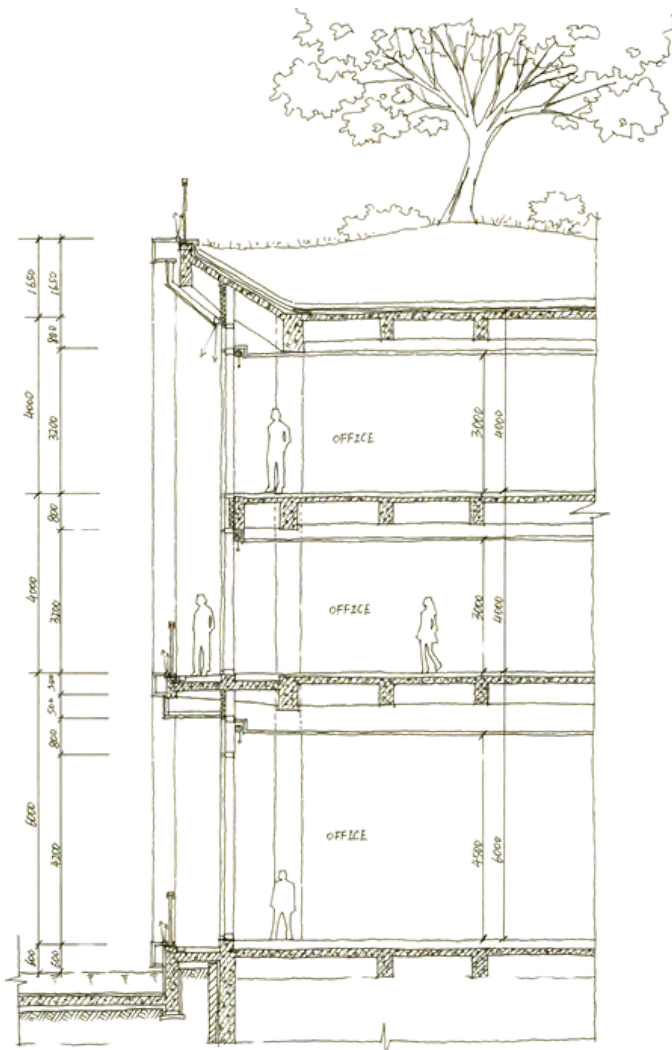
2nd Floor



3rd Floor



4th Floor



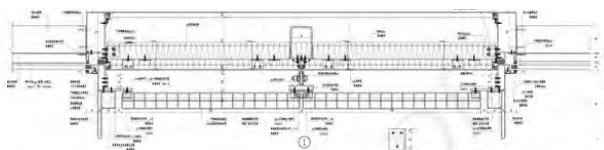
ROOF GARDEN

LOOKING FOR MOUNTAINS AND RIVERS TO RESHAPE "DISCONNECTED SPACE"
THE BONSAI GARDEN OF MODERN ART





Combining with the water tank on the first floor, a mist making device is installed to remove heat from the air through the evaporation of water, purify dust in the air, and play a role in dust removal, cooling, and regulating air humidity.



Vertical Greening

By improving the comfort of natural ventilation in summer, enhancing the sensory experience of the building environment, reducing the heat island effect in local areas, and creating a comfortable regional microclimate.